

APPENDIX 3: UTILITIES REVIEW

Introduction

- 1.1 This assessment has been prepared to establish whether there are any fundamental constraints associated with the connection of the new England Resource Recovery Centre (NERRC)
- 1.2 Drawing 350/06 'Utilities Plan' illustrates the location of existing utilities in and around the application site.

Foul Drainage

- 1.3 SLR Consulting Ltd has investigated the sewage systems in the area. Despite having been previously used for industry, the quarry site is not connected to the foul sewer, although it is understood that there is a sewerage tank within the plant area. Initial discussions with South West Water have demonstrated the potential to connect the foul sewer at Lee Mill Waste Water Treatment Works, which lies contiguous with the application boundary at the northern extent of the site.

Electricity

- 1.4 Upon operation, the Energy from Waste Facility will produce 25MW of electricity per year. This will provide all the energy requirements of the NERRC and provide additional electricity for the National Grid. There is a grid connection point to the south west of the site with appropriate capacity.

Water

- 1.5 Drawing 350/06 shows that there is a main water connection adjacent to the A38. The area of and around the quarry is not connected to the mains.
- 1.6 Mains water will be used for boiler supply top up, amenities and cleaning. The steam system within the EfW comprising the boiler, turbine, condensers and pipework will be closed system requiring only occasional topping up. The estimate water usage for the EfW is not significant.

Telecommunications

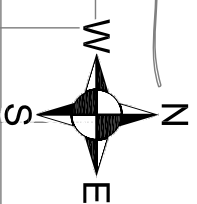
- 1.7 A British Telecom (BT) cable is located along New England Road/Hill.

Summary

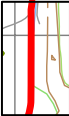




- 1.8 The northern part of the site is in close proximity to Lee Mill, and therefore utility infrastructure provision is good. To the south, there is no connection to the foul or mains water, and initial discussions with South West Water have demonstrated that the potential exists for a connection to the Lee Mill Water Treatment Works.

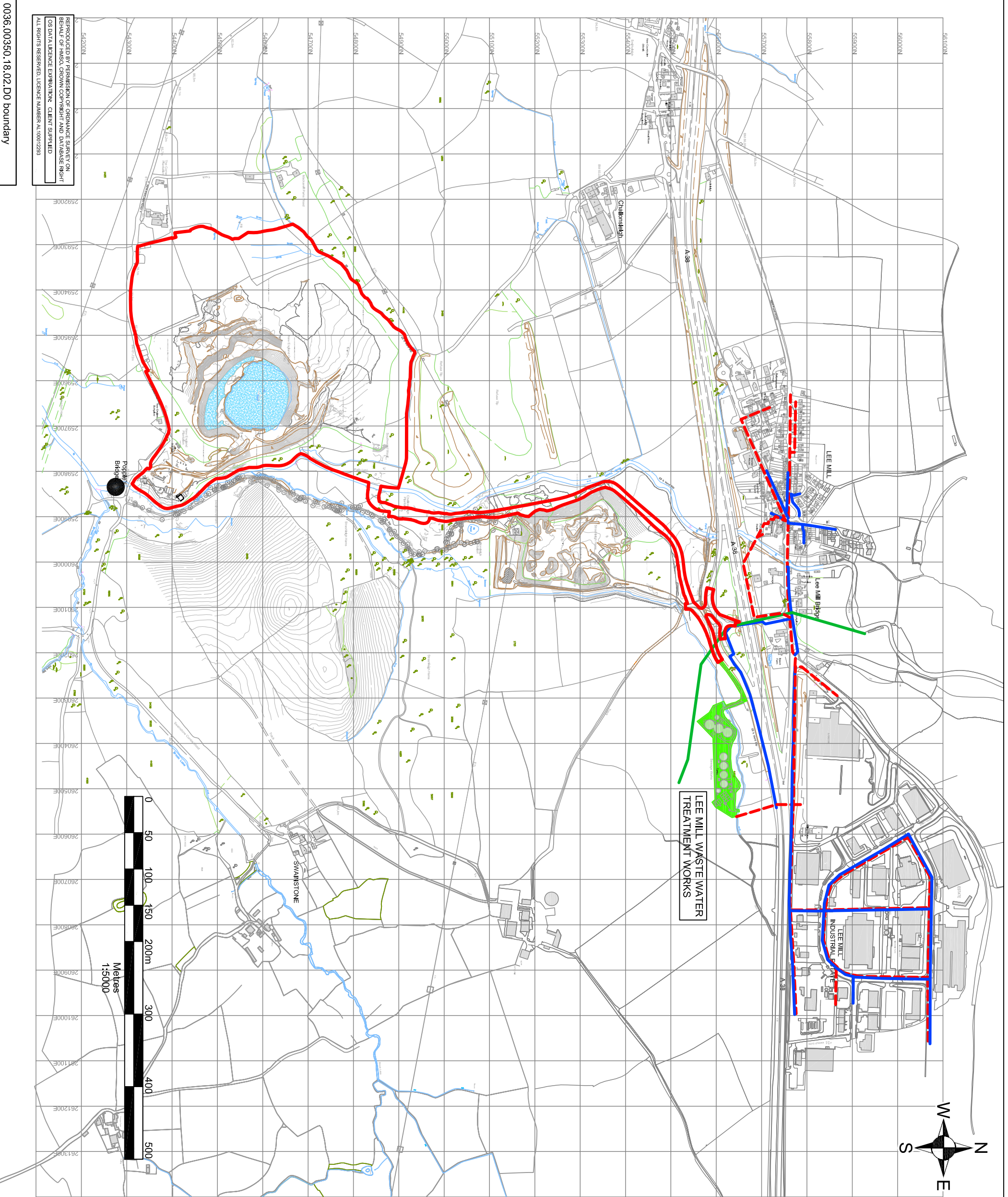
NOTES

1. SURVEY CARRIED OUT BY SLR CONSULTING LTD 19th MAY 2009

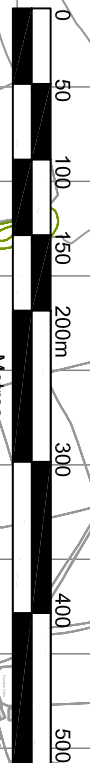


LEGEND

-  PLANNING APPLICATION BOUNDARY
-  TRUNK MAINS
-  DISTRIBUTION
-  RAW WATER
-  ELECTRICITY CONNECTION POINT



REPRODUCED BY PERMISSION OF OS/DANCE SURVEY ON BEHALF OF THE OS DATA LICENSING AND SERVICES UNIT
OS DATA LICENCE EXPIRES 31/03/2010
ALL RIGHTS RESERVED. LICENCE NUMBER AL10001293



Viridor

SLR
NEW ENGLAND
RESOURCE RECOVERY CENTRE
FULMAR HOUSE
BENIGNON CLOSE
OCEAN WAY
CARDIFF, CF24 5HF
T: 0292 049 1010
F: 029 2048 7903
www.slrconsulting.com

PLANNING APPLICATION
UTILITIES PLAN

0350/06

Scale 1:8,000 @A3
Date JANUARY 2010

0036.00350.18.02.D0 boundary