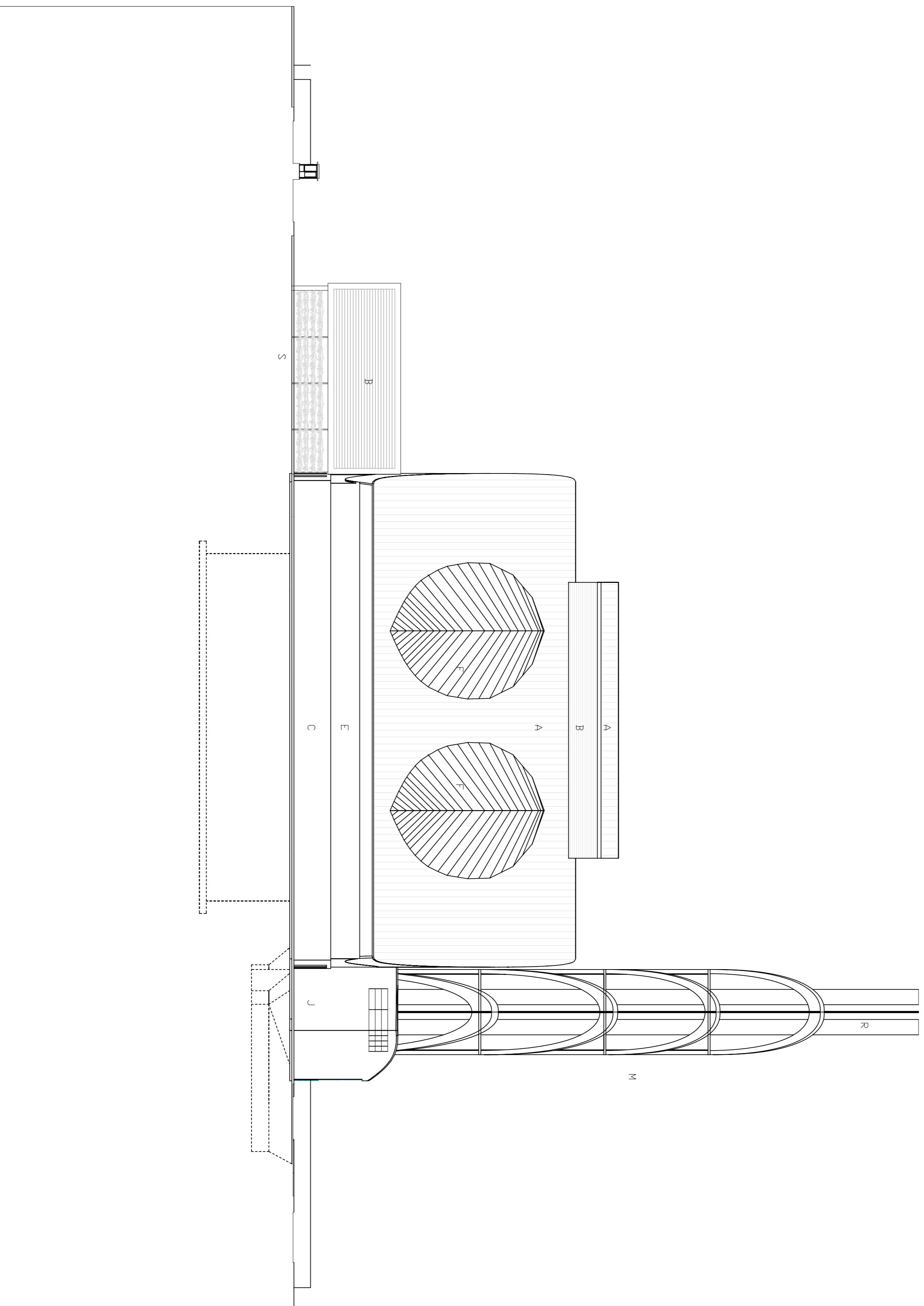


Materials key:

- Roof**
- A** Kalzip standing seam in stucco embossed finish with 3004 AZ11 clad alloy sacrificial layer with special custom Kalzip profile roof edge including secret gutters, Rodecca polycarbonate roof lights.
- B** Fin walls of Kalzip aluminium louvers with 3004 AZ11 alloy sacrificial layer for ventilation to boiler hall to match finish of standing seam roof.
- Walls**

- C** EW base skin of modular 200 mm depth gabbon baskets filled with dry laid washed shale waste 80 of nominal 250mm size to form rain screen. Alternative: alternative modular steel panels to F&L No. 7023 Pearl Metal louvers - RAL no 7023 Pearl dark grey will be introduced where necessary for ventilation and the entry of combustion air within the top level of this nominal 5m high band.
- D** Door profile of nominal 600 mm RS Channels painted finish for protection of adjacent wall finishes.
- E** A mixture of vertical Kalzip standing seam in stucco embossed finish with 3004 AZ11 clad alloy sacrificial layer and Rodecca double skin polycarbonate of finely graded, delicate multi hue to suit the contours of the areas behind the facade.
- F** Wave fenestration Rodecca double skin polycarbonate of finely graded sea green hue.
- G** Kalzip standing seam panels laid to angle in stucco embossed finish with 3004 AZ11 clad alloy sacrificial layer.
- H** ACC screen, Rodecca single skin polycarbonate of finely graded sea green hue to north and south elevations. East elevation draped with Kalzip perforated facade over coloured sinusoidal sheeting by plant contractor as wind wall to ACC.
- Offices**
- J** Kalzip Nature Roof low maintenance self sustaining sedum system on a Kalzip standing seam base. Plug painted type with extended maintenance agreement and safety system.
- K** Greening and safety system.
- L** Concrete block paving in contrasting colours and textures to grid pattern shown
- M** Tower structure in painted steel plate and tubes in light grey RAL no. 7035.
- Stack & Accessories**
- R** Stack and accessories, lightning conductor, navigation lights, and hoop ladders. In light grey RAL no. 7035.
- S** Reinforced flat concrete wall with smooth formwork surface with exposed panel joints established with vertical clinking flanking on stainless steel wire Jakob veils.
- Notes**
- RAL colours noted are RAL K7 Classic individual cards of the registers RAL40-HR - semi matt finish and RAL 64-GL - gloss finish are to be used to guarantee a reliable manufacture and control of the RAL colours. Materials outlined above may be subject to substitution by other equal and approved products.



SLR - Architecture

Architects Engineers Environmental Consultants
TRIDENT PARK, CARDIFF - PLANNING APPLICATION
 West Elevation
 1/400 at A1
 Project Ref: 0036.00306.25

Drawing No. EM4-POR-19-P0

Treenwood House Rowden Lane Bradford-on-Avon Wills BA15 2AU
 Tel: 01225 393400 website: www.slrcoupling.com