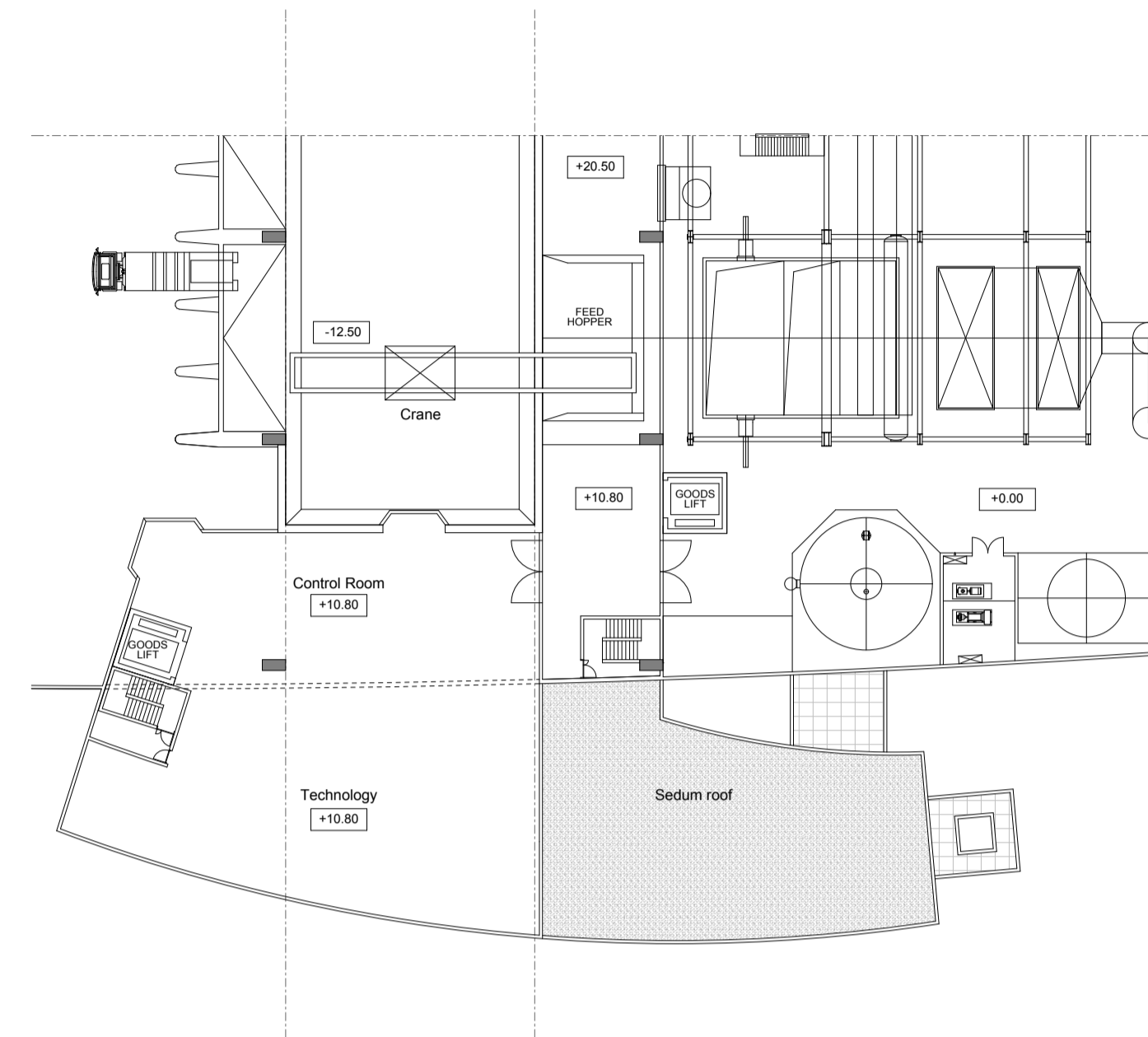
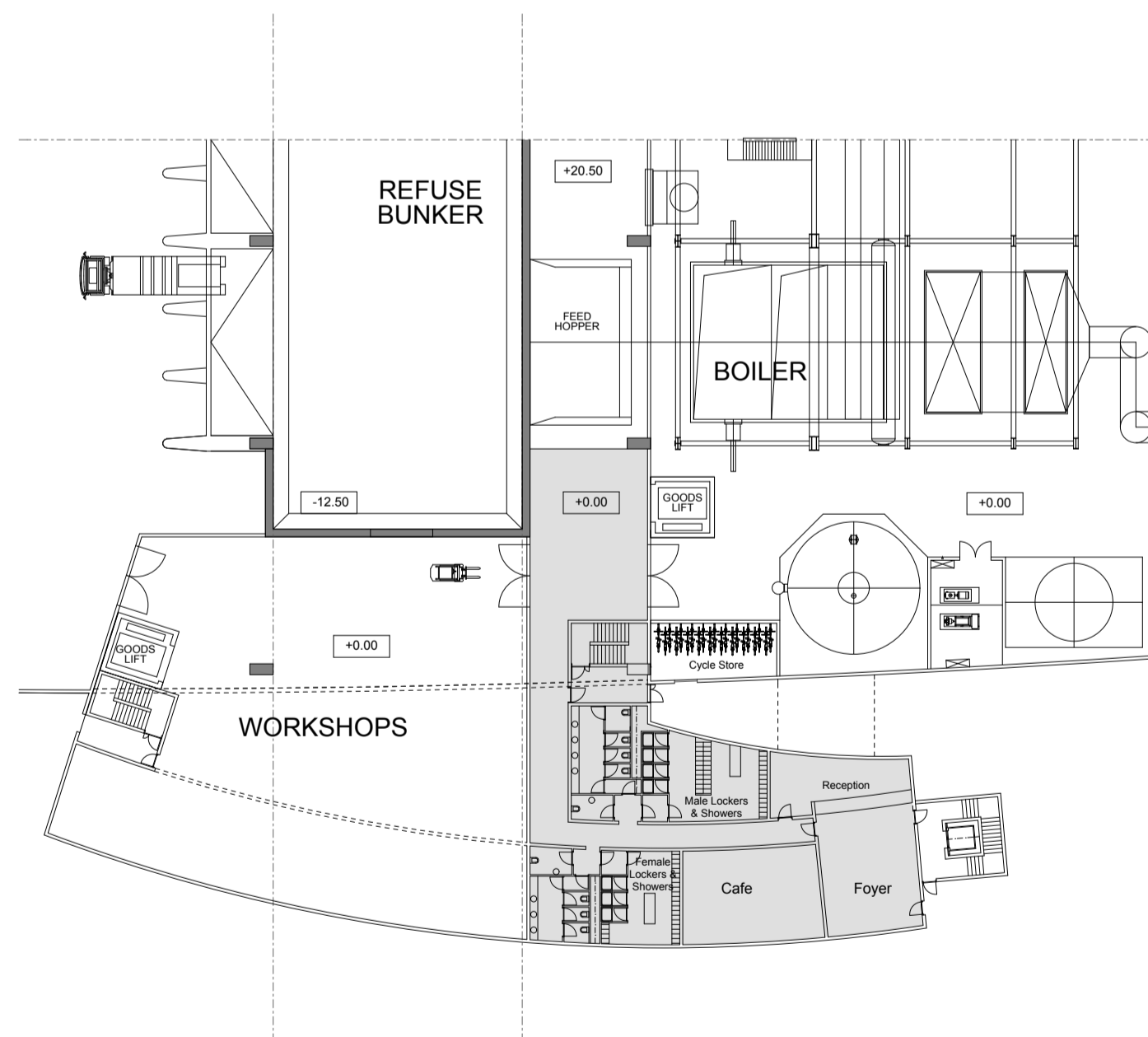


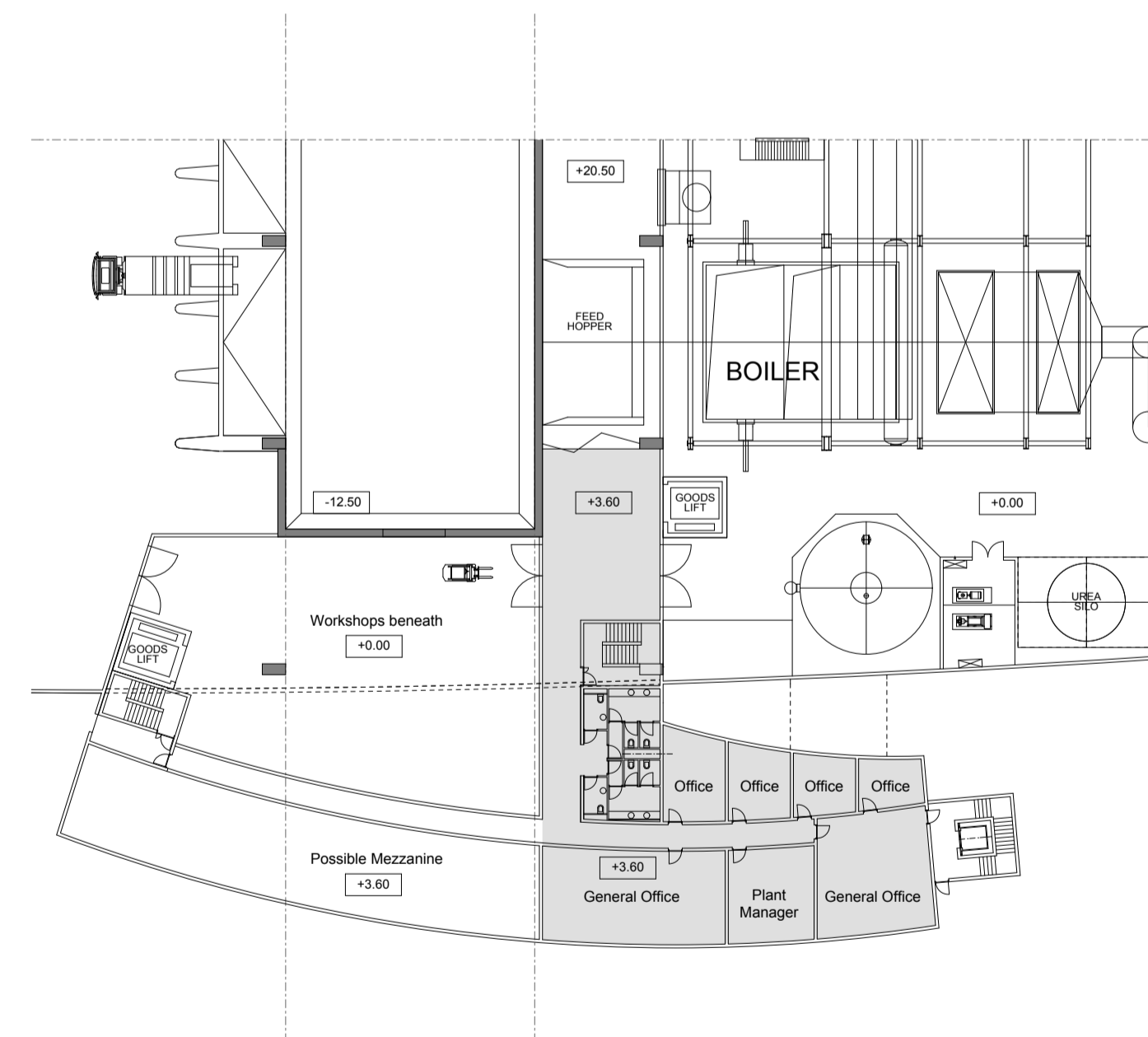
Second Floor Plan - Plant Storage, Visitors Centre, Seminar rooms and Exhibition Area



Third Floor Plan - Control Rooms & Technology

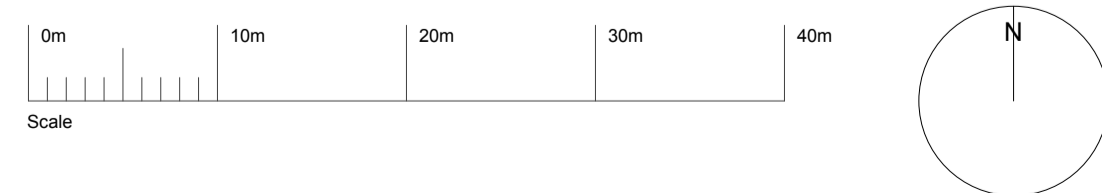


Ground Floor Plan - Ancillary Spaces



First Floor Plan - Offices for EW staff

**Viridor**



**Architecture & Planning Solutions**  
 Architects Landscape Architects Interior Designers Urban Consultants  
**TRIDENT PARK, CARDIFF - ENERGY from WASTE & RECYCLING FACILITY**  
 Office Floor Plans  
 Scale 1/400 at A1 Jan 2010  
 Drawing No. EfW-P0-14  
 London Studio, 10 Forest Drive, Keston Park, Kent BR2 6EF  
 Tel. 01689 852 622 e-mail: david@butterworths.demon.co.uk