

A 4 spaces for articulated lorries

Gate house and weighbridges

BOILER ASH STORAGE  
200000

BOILER ASH HALL

BOILER HOUSE

BOILER

BOILER

TRANSFORMERS MV/LV

TURBINE

Surface Water Attenuation Pond

Surface Water Attenuation Pond

COACH PARKING

WORKSHOPS

WASTE RECEPTION HALL

Roof

Materials Key

Walls

C

EIM base slab of modular 300 mm depth gation beams fixed with dry

cast in situ concrete. The concrete shall be reinforced with 200mm dia

bars at 150mm centres. The concrete shall be finished to a smooth

finish. Alternatively modular steel panels to RAL No. 7023 Pearl

grey. -32k, no 7023 Pearl dark grey will be introduced where

necessary for ventilation and the entry of combustion air within the

top level of the nominal 5m high band.

Door profile of nominal 500 mm RS Chumak's sealed finish for

protection of adjacent wall finishes.

A number of vertical Keldip standing seam in silicon embossed finish

with 3004 ALZNT1 clear alky sacrificial layer over Rockwool acoustic skin

with 3004 ALZNT1 clear alky sacrificial layer will be used for the

function of the steel behind the facade.

Walls construction: Rockwool double skin polyurethane of freely

grated sea green hue.

G

Keldip standing seam panels left to angle in silicon embossed finish

with 3004 ALZNT1 clear alky sacrificial layer over Rockwool acoustic skin

with 3004 ALZNT1 clear alky sacrificial layer.

H

H-C Screens: Rockwool single skin polyurethane of freely graded sea

green hue to north and south elevations. External elevation finished with

Keldip perforated facade over coloured structural steelwork by plant

contractor as shown on DWG 19/20.

Offices

J

Keldip Nature floor low maintenance self-sustaining sodium system on a

standing seam base. Flag painted type with weekend maintenance

agreement and safety system.

Openair facade in Rhinoceros angled standing seam.

Openair facade to Screens southwester and southeaster in

Rhinochrome primer 4 grey. Screen with 3004 ALZNT1 silver finish

Painting & Pathways

L

Concrete block paving in contrasting colours and textures to grid

pattern shown

Stair & Accessories

M

Steel structure in painted steel plates and tube in light grey RAL no.

7025.

R

Stair and accessories, lightning conductor, navigation lights,

maintenance platform

and hoop ladders. In light grey RAL no. 7025.

Reinforced main concrete wall with smooth network surface with

exposed panel joints established with vertical draining planning on

external side and vertical drain.

Note

Foundation noted on RAL 47 Classic individual casts of fine

aggregate RAL 4841-1R - semi matt finish and RAL 4841-2C - glass finish

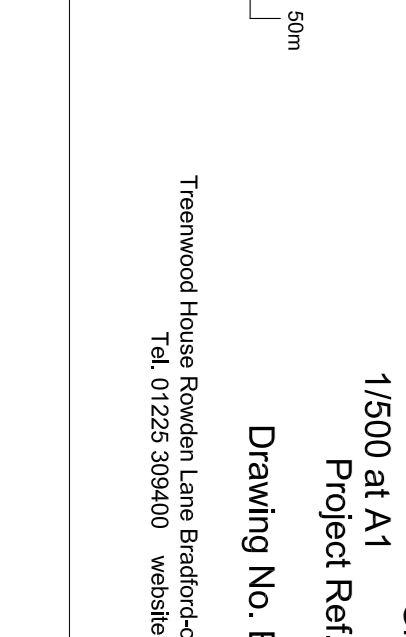
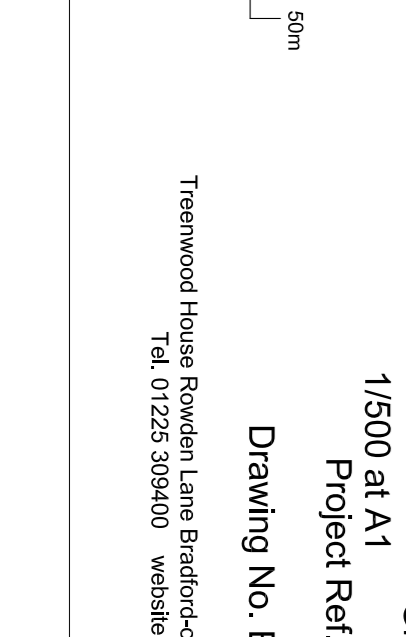
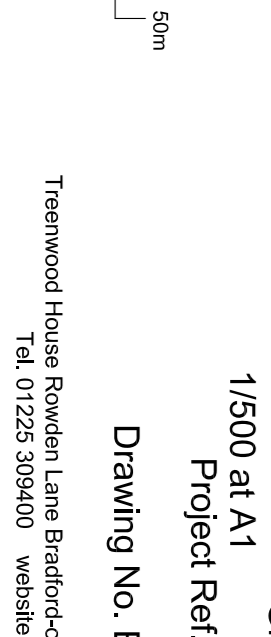
are to be used to guarantee a durable manufacture and control of

Materials outlined above may be subject to substitution by other

equal and approved products.

KEY:

SITE BOUNDARY



TRIDENT PARK, CARDIFF - PLANNING APPLICATION  
Architects Engineers Environmental Consultants  
Ground Floor Plan  
January 2010  
Project Ref: 0036/00306.25  
Drawing No. EMW-POR-11.P0

SLR - Architecture  
Tridentwood House Rowden Lane Bradford-on-Avon Wiltshire BA15 2AU  
Tel: 01725 393400 website: www.slrconsulting.com

